 **William & Mary**
Office of the Dean of Arts & Sciences

<p>Administration & Finance Sherri Powers spowers@wm.edu 1-2471</p>	<p>Dean Faculty of Arts & Sciences Maura J. Donoghue Welles dean-as@wm.edu 1-2470</p>	<p>Faculty Facilities Arthur Knight aknig@wm.edu 1-1282</p>	<p>Emergency Planning Eric Bradley eibrad@wm.edu 1-2220</p>
<p>Communications Steve Otto scotto@wm.edu 1-2496</p>	<p>Listen to: Advancement Alumni Affairs Colonial Williamsburg External constituents Jefferson Laboratory Office of Research W&M Foundation</p>	<p>Committees: Advisory on Space Management Council of Chairs & Program Directors Faculty Affairs</p>	
<p>Development Gerald Bullock gbul@wm.edu 1-1023</p>	<p>Dean Graduate Studies & Research Virginia Torczon dean-gr@wm.edu 1-3460</p>		
<p>Contact departments/programs: American Studies Anthropology Applied Science Biology History Physics Psychological Sciences</p>	<p>Contact departments/programs: Chemistry Computer Science Data Science Economics Geology Government International Relations Knowledge & Health Sciences Mathematics Military Science Public Policy Sociology</p>	<p>Contact departments/programs: Art & Art History Classical Studies English Modern Languages & Literatures Music Philosophy Religious Studies Theatre, Speech & Dance</p>	<p>Contact departments/programs: African Studies Computational & Applied Mathematics & Statistics Environmental Science & Policy Film & Media Studies Gender, Sexuality & Women's Studies Global Studies Linguistics Medieval & Renaissance Studies Neuroscience Self-Isolated regions Interdisciplinary minors</p>
<p>Supervision: Office of Graduate Studies and Graduate Center</p>	<p>Supervision: Office of Academic Advising Degree/Inspector requirements eLearning initiatives Employment management Global Research Institute Global review & changes Internships New faculty orientation Online course evaluations Student concerns University Chief Transfer Officer</p>	<p>Supervision: Bovick Institute Center for the Liberal Arts Newton-Distinguished Prize Summer School St. Andrews Joint Degree Program Undergraduate curriculum Writing Resources Center</p>	<p>Supervision: 2025 Scholars Center for Geospatial Analysis Charles Center (Director) Grant oversight Mellon, Inclusive Excellence, Previews, Internships in Asia Departmental Honors Domestic Study Away Global Film Festival Intra Semesters Minoror Scholars New faculty orientation Prestigious scholarships Promoting undergraduate research Quality Enhancement Plan Sharp Public Writing Program Shupe Community Scholars Program W&M Scholars (W&MCS)</p>
<p>Listen to: Graduate Studies Advisory Board Jefferson Laboratory Office of Grants & Research Admin* Registrar's Office (graduate issues) University Space Research Assoc. Vanderbilt Animal Care Unit Virginia Council of Graduate Schools Virginia Microelectronics Consortium Virginia Space Grant Consortium</p>	<p>Listen to: Registries' Office Student Affairs Undergraduate Admission Virginia State Transfer Committee</p>	<p>Listen to: U.S.C. Programs Reves Center for International Studies</p>	<p>Listen to: U.S.C. Programs Reves Center for International Studies</p>
<p>Committees: Graduate Studies Advisory on Space Management*</p>	<p>Committees: Academic Status Degrees</p>	<p>Committees: Assessment Steering Educational Policy International Advisory (I&EA) Writing</p>	<p>Committees: Diversity & Inclusion Lead, Council Honors & Interdisciplinary Studies International Studies Advisory</p>

Revised July 22, 2020

1

John Donahue (leave)
Teresa Longo (Reves)
Virginia Torczon
Janice Zeman (leave)

Gerald Bullock
Steve Otto
Sherri Powers

2

Assistant Dean for Diversity, Equity, and
Inclusion

3

Guidelines for any reorganization:

- Articulate clear responsibilities
- Support collaborative work
- Maintain current cost
- Create sustainable workloads
- Allocate budget according to A&S priorities

4

My Conception of DOF Role:

- Partner with the faculty and staff of A&S to guide knowledge creation and dissemination and promote organizational work
- Collaborate with FAC in shared governance and CCPD on shared management
- Receive counsel from Faculty, Staff, Undergraduate and Graduate student
- Lead faculty hiring, mentoring, retention, and RPT processes
- Work with Chairs and Program Directors to strengthen A&S work
- Address major faculty and departmental issues
- Work alongside University Advancement, especially Executive Director of A&S Development, and with alumni, parents, & donors and to bring attention and resources to the work being done in A&S
- Chair A&S Advisory Board of Alumni, Parents, and Donors to have strategic thought partners for major initiatives and cultivate support
- Advocate for A&S Space
- Represent A&S with university centers/institutes, other units, W&M leadership

5

Things that will not change:

Transparent processes and communication;

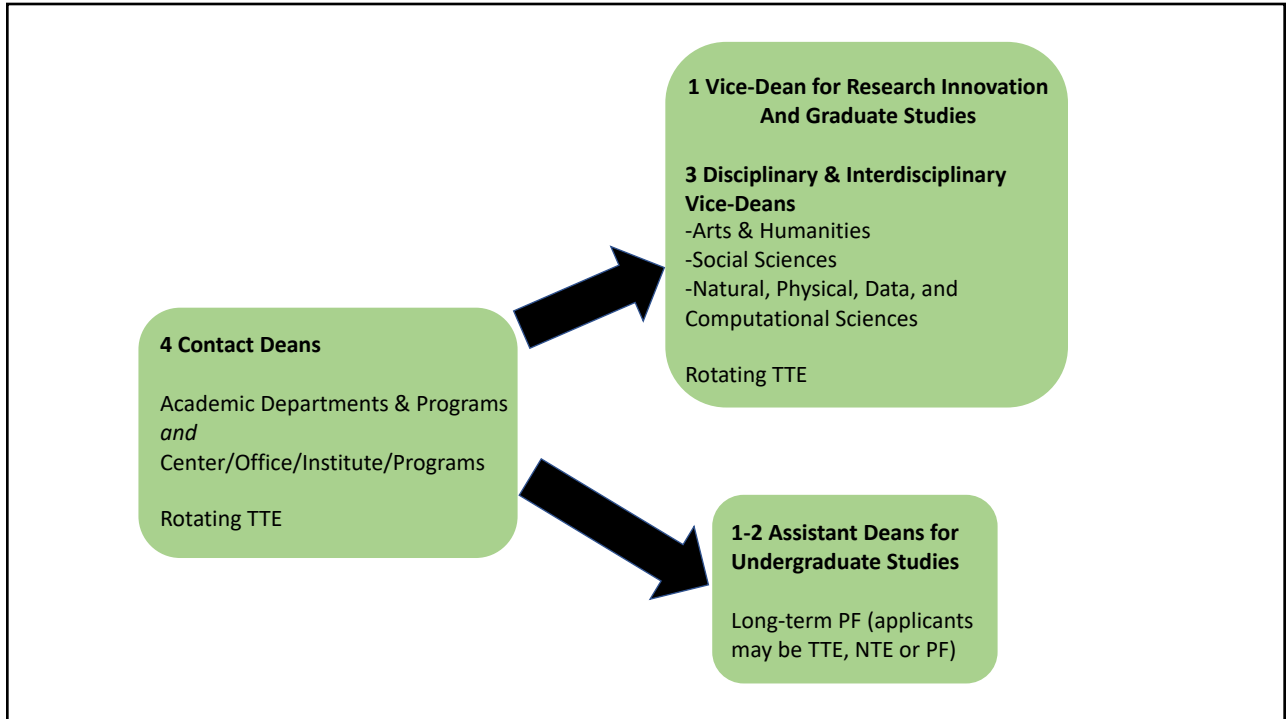
Strong partnership between A&S Dean's Office and units/offices/centers;

Robust shared governance and collaboration;

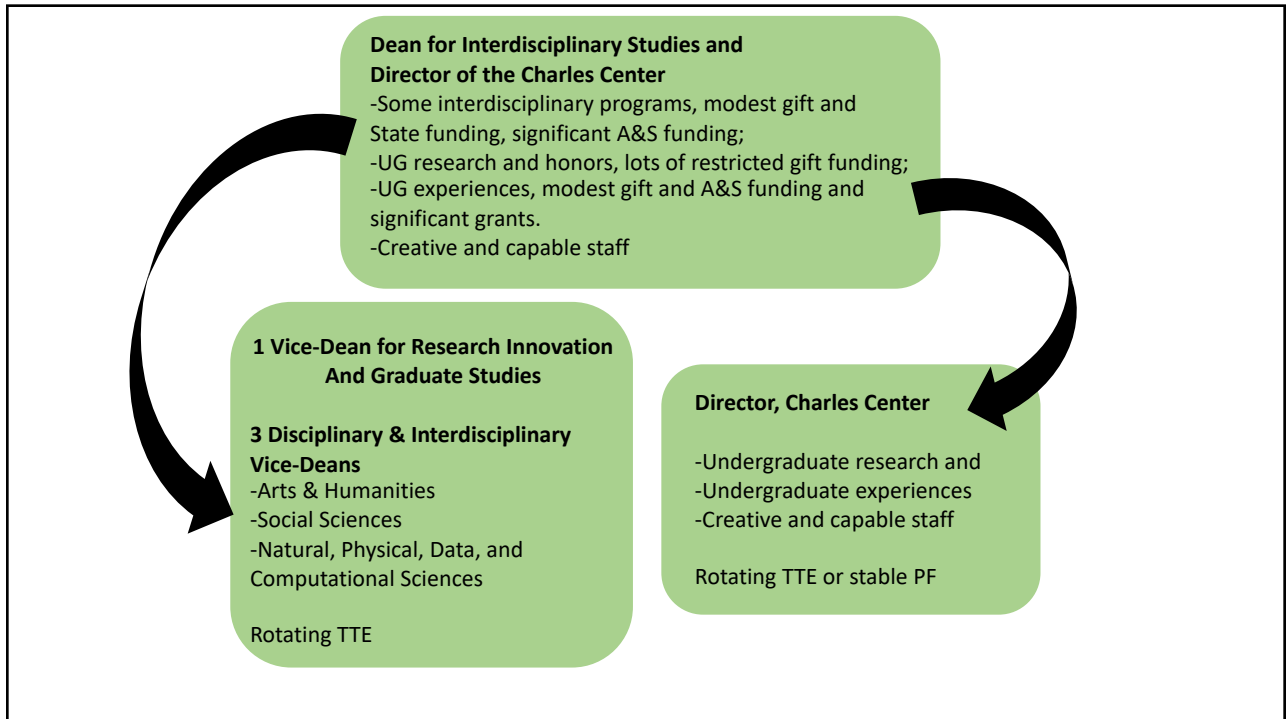
Respect for and fair treatment of all members of A&S;

Empowering A&S units and people.

6



7



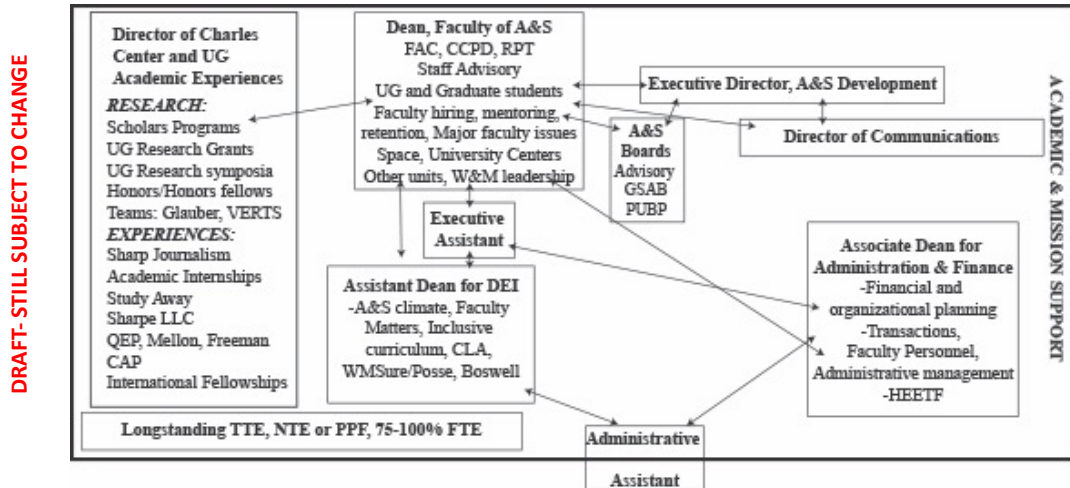
8

A&S's Interdisciplinary Programs and CC work

Interdisciplinary Program	Dedicated Staff Support	Responsible Administrator	Source of funding for staff position	Staff Situation
Africana Studies	.5FTE	Longo (NOT CC)	A&S	joint with GSWS
American Studies	1FTE	Torczon	A&S	
Biochemistry	-	Longo (NOT CC)	A&S	Chemistry Admins
Center for Geospatial Analysis	.2FTE	Longo (CC)	A&S	joint with CC
Computational and Applied Mathematics and Statistics	-	Longo (NOT CC)	A&S	Math Admins
Data Science	.5FTE	Zeman	A&S	joint with APSC
Environmental Science and Policy	.5FTE	Longo (NOT CC)	A&S	joint with KECK lab
Film and Media Studies	.25-.5FTE	Longo (NOT CC)	A&S	joint with GBST
Gender, Sexuality, and Women's Studies	.5FTE	Longo (NOT CC)	A&S	joint with AFST
Global Studies	.5-.75FTE	Longo (NOT CC)	A&S	joint with FMST
Departmental Honors	-	Longo (CC)	A&S	
International Relations	.5FTE	Zeman	A&S	joint with JDP
INTR courses	-	Longo (CC)	A&S	
Judaic Studies	.2FTE	Longo (CC)	A&S	joint with CC
Linguistics	-	Longo (CC)	Gift	CC
Marine Sciences	-	Longo (NOT CC)	A&S	Director's home dept Admins
Med-Res	-	Longo (CC)	A&S	Director's home dept Admins
Neurodiversity	-	Longo (CC)	Gift	
Neuroscience	none assigned but CC supports	Longo (CC)	Gift	
Public Health	-	Longo (NOT CC)	A&S	KINE Admins
Public Policy	1 FTE	Zeman	Gift and A&S	
Self-designed majors	-	Longo (CC)	A&S	
Wellness Apps	none assigned	Longo (NOT CC)	A&S	

9

Focus Charles Center mission Garner resources for A&S programs Create strong strategic partnerships



Allow the Dean of the Faculty of A&S to participate in and be well-informed about opportunities and challenges across the academic community

10

Director of Charles Center and UG Academic Experiences

RESEARCH:

Scholars Programs
 UG Research Grants
 UG Research Symposia
 Honors/Honors Fellows
 Teams e.g. Glauber, VERTS, English Stonehouse

EXPERIENCES:

Sharp Journalism
 Academic Internships
 Study Away
 Sharpe
 QEP, Mellon, Freeman
 Civic Agency Project

 International Fellowships

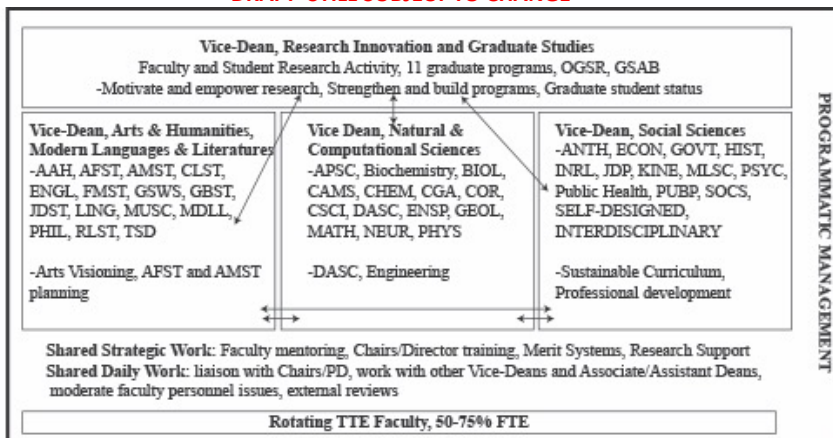
 WMSURE/Posse/Boswell

11

Sustainable Dean's Positions
 (academic programs and departments only)

To focus on stimulating and supporting
 faculty research and scholarship

DRAFT- STILL SUBJECT TO CHANGE



NOTE:
 There will be a collaborative process announced soon by which departments and programs will be assigned to a disciplinary/interdisciplinary dean

Rarely, there may be reassignment if programmatic focus shifts

Remain tied to the faculty experience (teach a class or perform research)

12

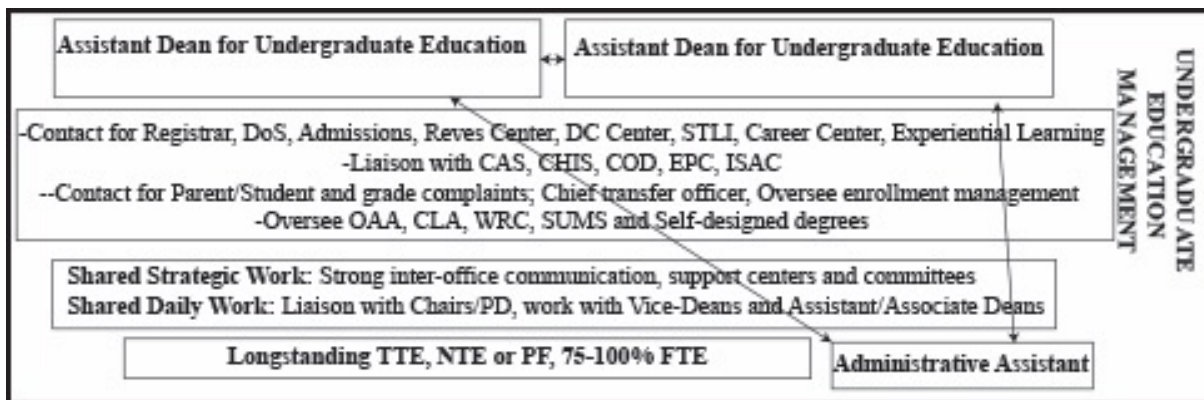
Motivating Research

- A&S faculty research fund (\$250,000 allocation)
- Work with Vice-Provost for Research to incentivize creative scholarship

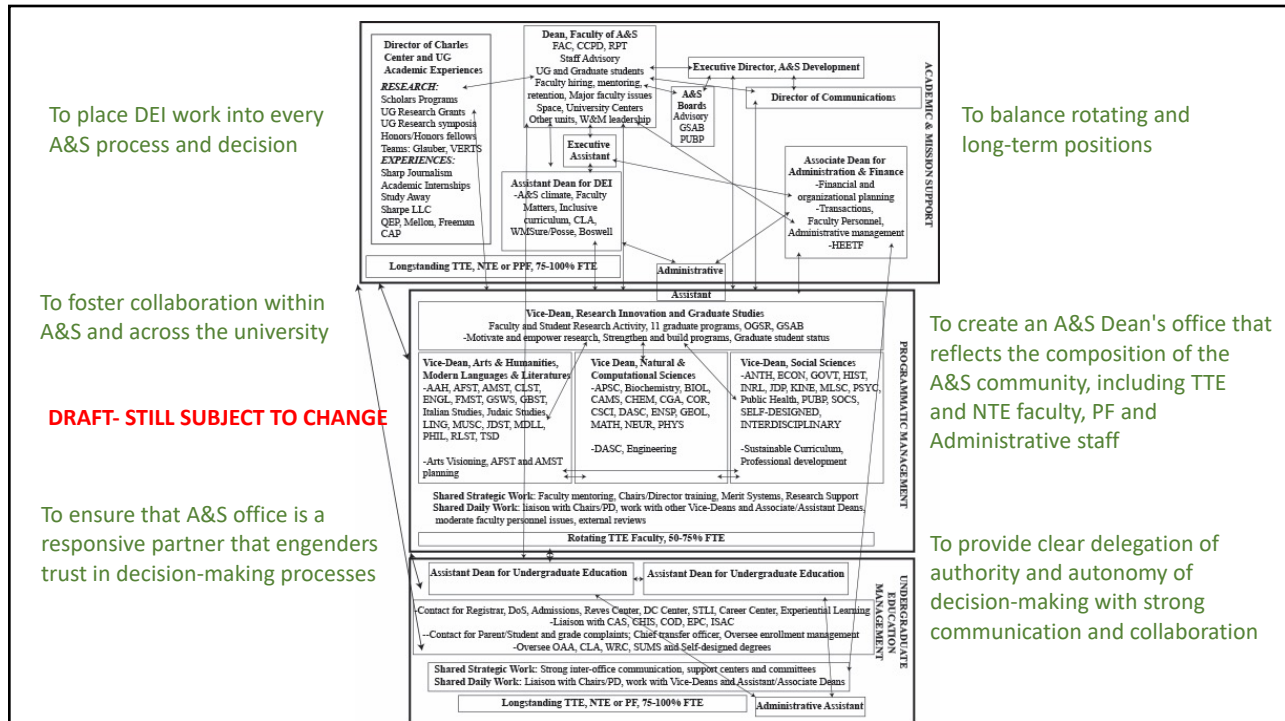
13

Provide stable management of undergraduate and graduate curricula

DRAFT- STILL SUBJECT TO CHANGE



14



15

Chances to learn more, ask questions, and share ideas:
 FAS meeting 3/2 (today)
 CCPD meeting 3/11 3:30-5 PM
 A&S Faculty and Staff Information Session 3/12 3-4:30 PM
 Another information session next week (TBD)

Application Process:
 -Search Committee consisting of individuals nominated by FAC/CCPD/NTE, Staff, SA, and GSA advisory groups plus past administrators
 -Request for Applications released **M 3/22ish**
 -Application deadline **F 4/9ish**
 -Interviews in April
 -Announcements May
 -Start mid-June/early July

16