



# Campus Comprehensive Plan

## Phase 1 | Interim Analysis Findings

July 11, 2024



3

## Campus Past & Present



# Campus Milestones

## Historic Timeline

◀ 1600

1650

1700

1750

1800

1850

1900

1950

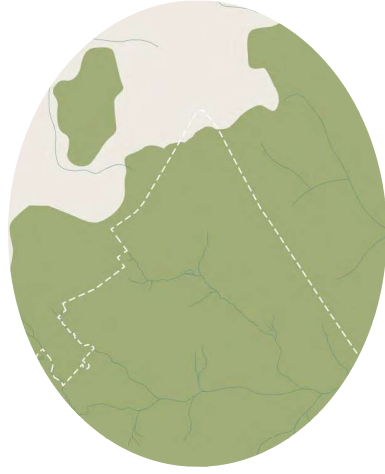
2000

2020 ▶

# Campus Milest

## Historic Timeline

THE ORIGINS OF  
WILLIAMSBURG



1600

1650

1700

1750

1800

1850

1900

1950

2000

2020

**900-1650 C.E.**

Tsenacomoco (the Powhatan Paramount Chiefdom) alliance of Algonquin-speaking Native Americans emerges.

**1607**

The first English colonists arrive at Jamestown.

**1618**

Planning is initiated for a college in the Virginia Colony.

**1619**

The first Virginia General Assembly convenes.

**1632**

Middle Plantation is settled.

William & Mary Total Student Enrollment

Sources: *Encyclopedia Virginia*; Susan H. Godson, et al., *The College of William & Mary: A History* (Williamsburg: King and Queen Press, 1993); "History of William & Mary," *William & Mary*, [https://www.wm.edu/offices/deanofstudents/services/communityvalues/studenthandbook/history\\_of\\_william\\_and\\_mary/](https://www.wm.edu/offices/deanofstudents/services/communityvalues/studenthandbook/history_of_william_and_mary/)

# Campus Milestones

## Historic Timeline

THE ORIGINS OF  
WILLIAMSBURG

WILLIAM & MARY:  
THE FIRST TWO CENTURIES



1600

**900-1650 C.E.**

Tsenacomoco (the Powhatan Paramount Chiefdom) alliance of Algonquin-speaking Native Americans emerges.

**1607**

The first English colonists arrive at Jamestown.

— William & Mary Total Student Enrollment

1650

**1618**

Planning is initiated for a college in the Virginia Colony.

**1619**

The first Virginia General Assembly convenes.

**1632**

Middle Plantation is settled.

1700

**1693**

William & Mary founded. King William and Queen Mary of England approve charter for a "Place of universal Study, a perpetual College of Divinity, Philosophy, ... Arts and Sciences" in Virginia.

**1699**

Middle Plantation, renamed Williamsburg, is made the capital of Virginia; a town grid is laid out.

1750

**1695-1739**

The "Ancient Campus" is constructed, including the College Building (which became known as the Wren Building), the Brafferton Building, and the President's House.

1800

**1718**

William & Mary purchases 17 enslaved people and continues to enslave African Americans until 1865.

**1781**

William & Mary unites the faculties of law, medicine, arts and becomes a university.

1850

**1861-1865; 1881**

The university suspends operations temporarily during the Civil War and again when financial resources are depleted.

**1906**

The Commonwealth of Virginia purchases William & Mary, making it a public university in the state system of higher education.

1900

2000

2020

Sources: *Encyclopedia Virginia*; Susan H. Godson, et al., *The College of William & Mary: A History* (Williamsburg: King and Queen Press, 1993); "History of William & Mary," *William & Mary*, [https://www.wm.edu/offices/deanofstudents/services/communityvalues/studenthandbook/history\\_of\\_william\\_and\\_mary/](https://www.wm.edu/offices/deanofstudents/services/communityvalues/studenthandbook/history_of_william_and_mary/)

# Campus Milestones

## Historic Timeline

THE ORIGINS OF WILLIAMSBURG

WILLIAM & MARY: THE FIRST TWO CENTURIES



CAMPUS EXPANSION

1600

**900-1650 C.E.**

Tsenacomoco (the Powhatan Paramount Chiefdom) alliance of Algonquin-speaking Native Americans emerges.

**1607**

The first English colonists arrive at Jamestown.

William & Mary Total Student Enrollment

1650

**1618** Planning is initiated for a college in the Virginia Colony.

**1619**

The first Virginia General Assembly convenes.

**1632**

Middle Plantation is settled.

1700

**1693**

William & Mary founded. King William and Queen Mary of England approve charter for a "Place of universal Study, a perpetual College of Divinity, Philosophy, ... Arts and Sciences" in Virginia.

**1699**

Middle Plantation, renamed Williamsburg, is made the capital of Virginia; a town grid is laid out.

1750

**1695-1739**

The "Ancient Campus" is constructed, including the College Building (which became known as the Wren Building), the Brafferton Building, and the President's House.

1800

**1718**

William & Mary purchases 17 enslaved people and continues to enslave African Americans until 1865.

**1781**

William & Mary unites the faculties of law, medicine, arts and becomes a university.

1850

**1861-1865; 1881**

The university suspends operations temporarily during the Civil War and again when financial resources are depleted.

**1906**

The Commonwealth of Virginia purchases William & Mary, making it a public university in the state system of higher education.

1900

**Early 1920s**

The first comprehensive campus plan is developed by the architect Charles Robinson and the landscape architect Charles Gillette.

**1918**

William & Mary becomes a coeducational institution of higher education.

1950

2000

2020

1,489

244

176

44

23

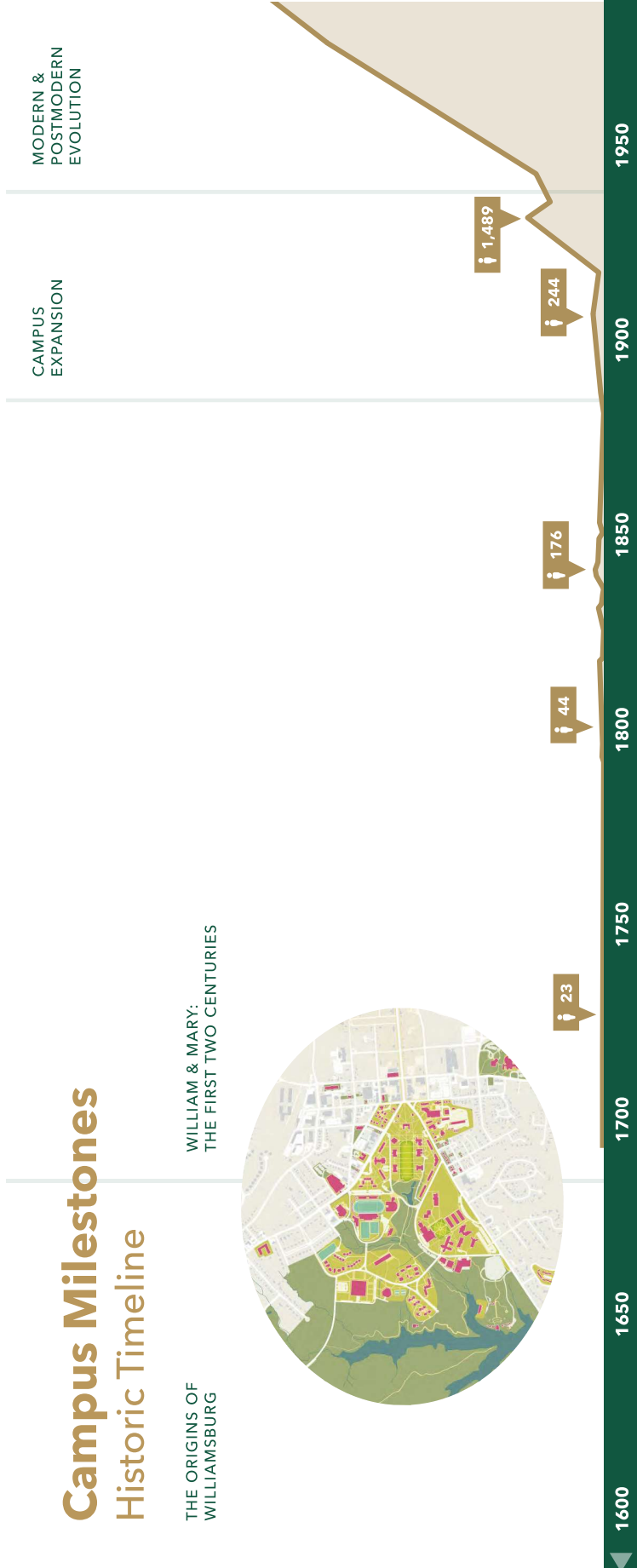
Sources: *Encyclopedia Virginia*; Susan H. Godson, et al., *The College of William & Mary: A History* (Williamsburg: King and Queen Press, 1993); "History of William & Mary," *William & Mary*, [https://www.wm.edu/offices/deanofstudents/services/communityvalues/studenthandbook/history\\_of\\_william\\_and\\_mary/](https://www.wm.edu/offices/deanofstudents/services/communityvalues/studenthandbook/history_of_william_and_mary/)

# Campus Milestones

## Historic Timeline

THE ORIGINS OF WILLIAMSBURG

WILLIAM & MARY: THE FIRST TWO CENTURIES



### 1600-1650 C.E.

Planning is initiated for a college in the Virginia Colony.

**1618** Tsenacomoco (the Powhatan Paramount Chiefdom) alliance of Algonquin-speaking Native Americans emerges.

**1619** The first Virginia General Assembly convenes.

**1632** Middle Plantation is settled.

William & Mary Total Student Enrollment

### 1693

William & Mary founded. King William and Queen Mary of England approve charter for a "Place of universal Study, a perpetual College of Divinity, Philosophy, ... Arts and Sciences" in Virginia.

### 1699

Middle Plantation, renamed Williamsburg, is made the capital of Virginia; a town grid is laid out.

### 1695-1739

The "Ancient Campus" is constructed, including the College Building (which became known as the Wren Building), the Brafferton Building, and the President's House.

### 1718

William & Mary purchases 17 enslaved people and continues to enslave African Americans until 1865.

### 1781

William & Mary unites the faculties of law, medicine, arts and becomes a university.

### 1861-1865; 1881

The university suspends operations temporarily during the Civil War and again when financial resources are depleted.

### 1906

The Commonwealth of Virginia purchases William & Mary, making it a public university in the state system of higher education.

### Early 1920s

The first comprehensive campus plan is developed by the architect Charles Robinson and the landscape architect Charles Gillette.

### 1918

William & Mary becomes a coeducational institution of higher education.

### 1950s-1980s

The campus expands to the west, with academic buildings in the New Campus and residential halls in the West Woods. Most buildings are designed in modern and later postmodern architectural styles.

### 1940

Virginia Institute of Marine Science (VIMS) founded.

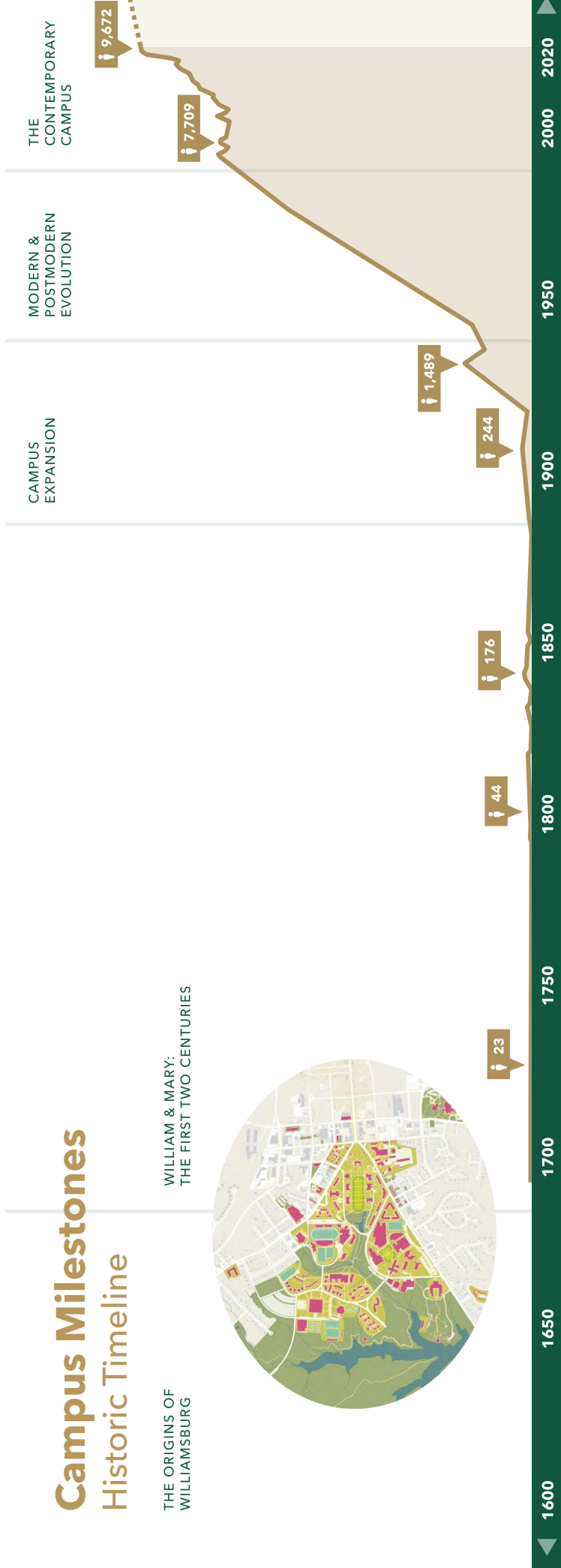
Sources: *Encyclopedia Virginia*; Susan H. Godson, et al., *The College of William & Mary: A History* (Williamsburg: King and Queen Press, 1993); "History of William & Mary," *William & Mary*, [https://www.wm.edu/offices/deanofstudents/services/communityvalues/studenthandbook/history\\_of\\_william\\_and\\_mary/](https://www.wm.edu/offices/deanofstudents/services/communityvalues/studenthandbook/history_of_william_and_mary/)

# Campus Milestones

## Historic Timeline

THE ORIGINS OF WILLIAMSBURG

WILLIAM & MARY: THE FIRST TWO CENTURIES



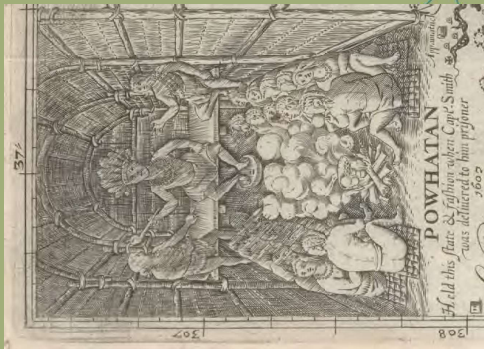
- 900-1650 C.E.** Tsenacomoco (the Powhatan Paramount Chiefdom) alliance of Algonquin-speaking Native Americans emerges.
- 1607** The first English colonists arrive at Jamestown.
- William & Mary Total Student Enrollment**
- 1618** Planning is initiated for a college in the Virginia Colony.
- 1619** The first Virginia General Assembly convenes.
- 1632** Middle Plantation is settled.
- 1699** Middle Plantation, renamed Williamsburg, is made the capital of Virginia; a town grid is laid out.
- 1693** William & Mary founded. King William and Queen Mary of England approve charter for a "Place of universal Study, a perpetual College of Divinity, Philosophy, ... Arts and Sciences" in Virginia.
- 1718** William & Mary purchases 17 enslaved people and continues to enslave African Americans until 1865.
- 1781** William & Mary unites the faculties of law, medicine, arts and becomes a university.
- 1861-1865; 1881** The university suspends operations temporarily during the Civil War and again when financial resources are depleted.
- 1906** The Commonwealth of Virginia purchases William & Mary, making it a public university in the state system of higher education.
- 1918** William & Mary becomes a coeducational institution of higher education.
- Early 1920s** The first comprehensive campus plan is developed by the architect Charles Robinson and the landscape architect Charles Gillette.
- 1950s-1980s** The campus expands to the west, with academic buildings in the New Campus and residential halls in the West Woods. Most buildings are designed in modern and later postmodern architectural styles.
- 1940** Virginia Institute of Marine Science (VIMS) founded.
- 1990-2024** Strategic infill projects following the principles of the 1987 master plan strengthen the campus core but reinforce separated campus areas.
- 2024-2025** William & Mary undertakes a new Campus Comprehensive Plan, Landscape Plan, and Learning Spaces Plan.

Sources: *Encyclopedia Virginia*; Susan H. Godson, et al., *The College of William & Mary: A History* (Williamsburg: King and Queen Press, 1993); "History of William & Mary," *William & Mary*, [https://www.wm.edu/offices/deanofstudents/services/communityvalues/studenthandbook/history\\_of\\_william\\_and\\_mary/](https://www.wm.edu/offices/deanofstudents/services/communityvalues/studenthandbook/history_of_william_and_mary/)



Time Immemorial-1693

# The Origins of Williamsburg Native Land, Colonial Settlement



**Powhatan, chief of the Tsenacomoco alliance**

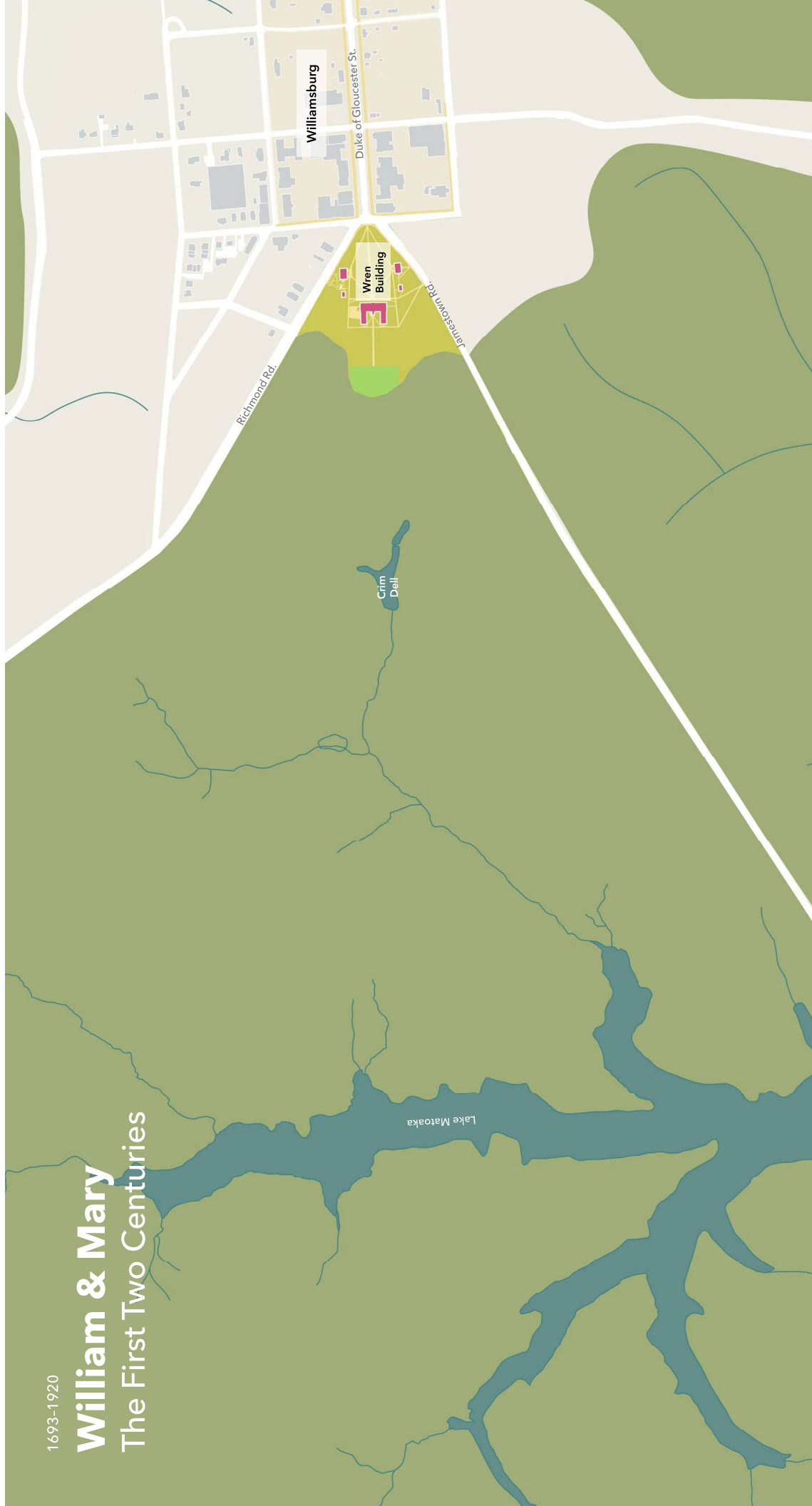
Source: Encyclopedia Virginia, <https://encyclopediavirginia.org/entries/tsenacomoco-powhatan-paramount-chieftdom/>

Future Campus  
Boundary

ARCHER'S HOPE  
SWAMP

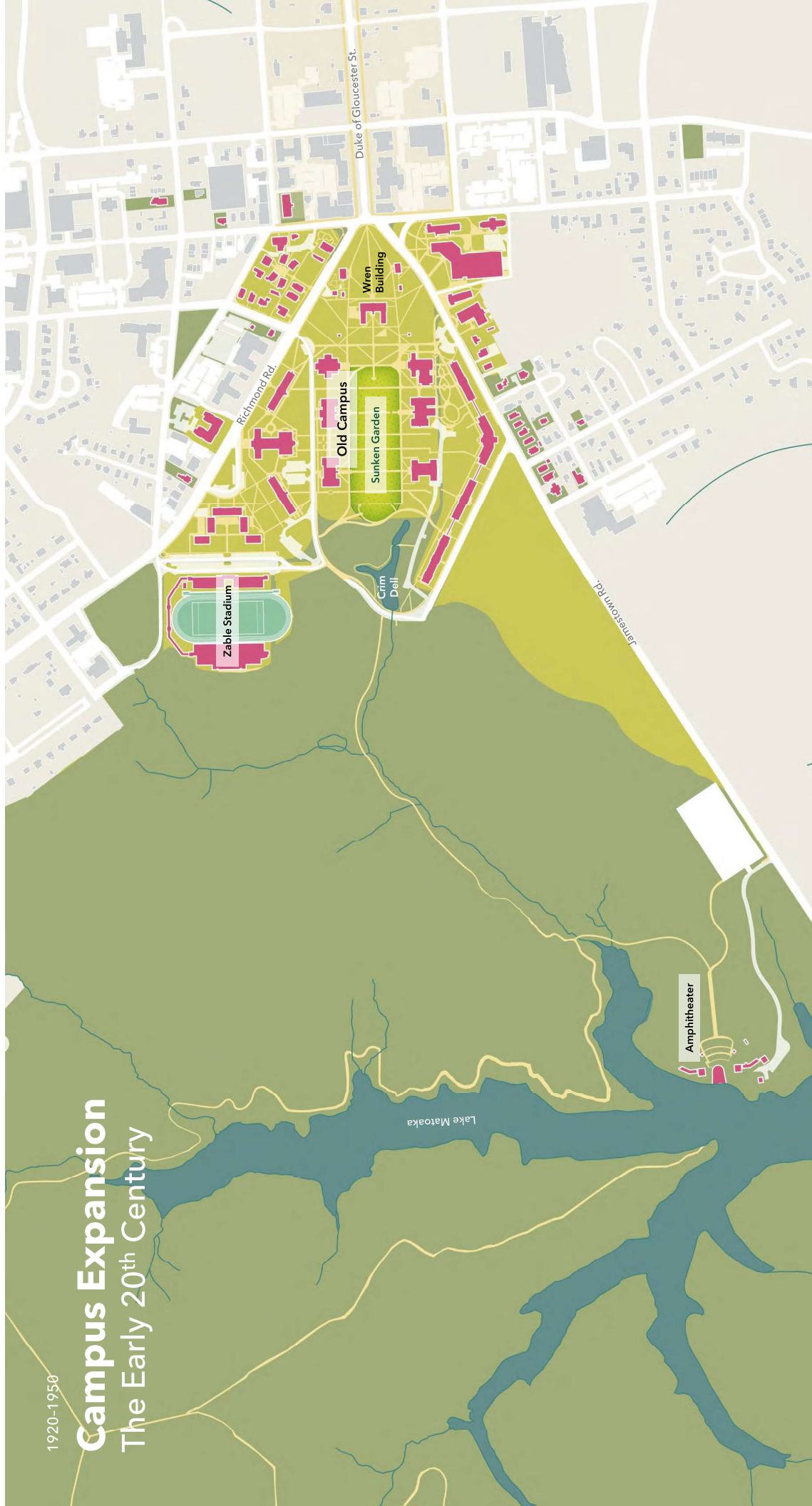
1693-1920

# William & Mary The First Two Centuries



1920-1950

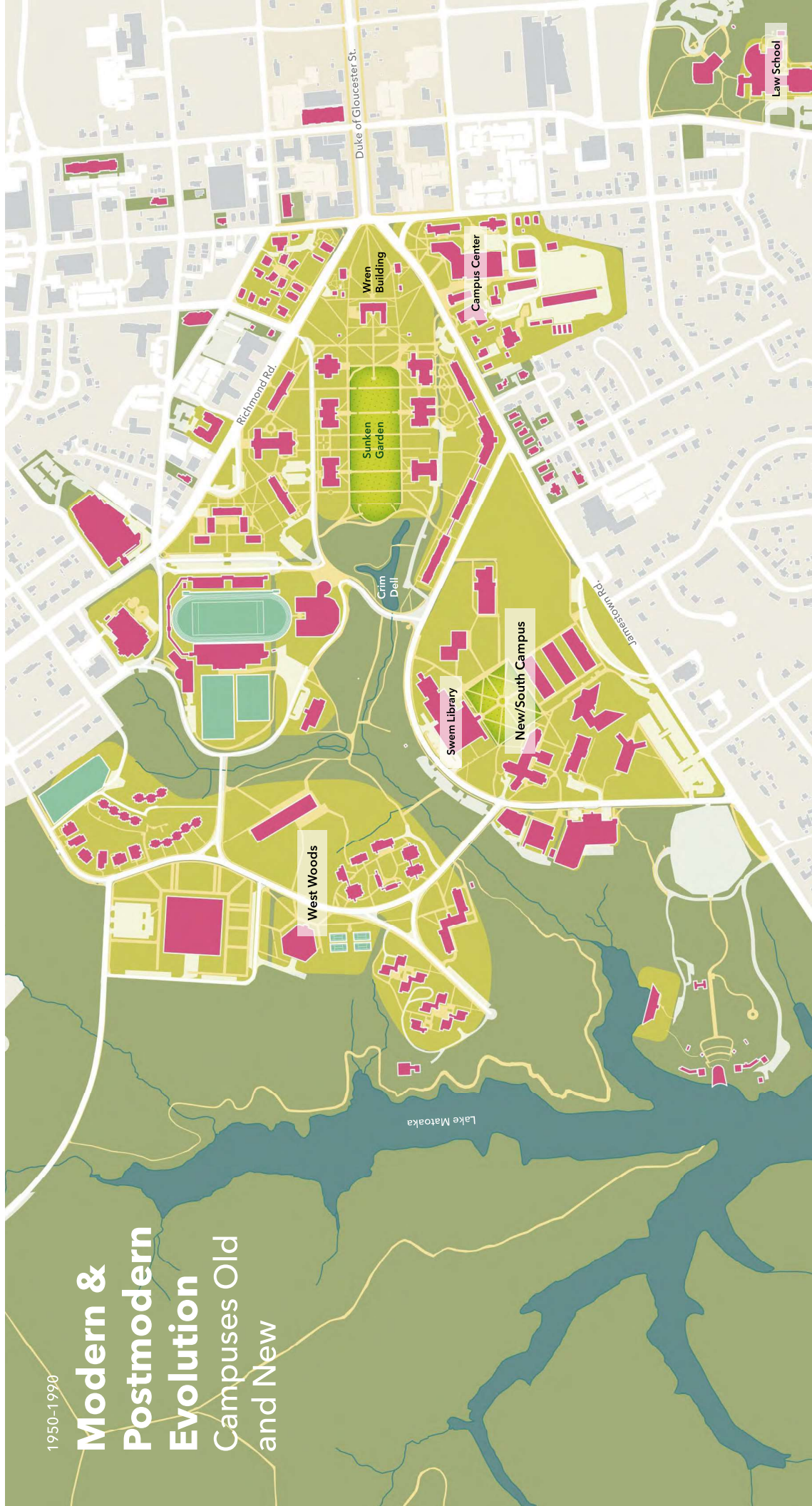
# Campus Expansion The Early 20th Century





1950-1990

# Modern & Postmodern Evolution Campuses Old and New





1990-2025

# The Contemporary Campus Strategic Infill

